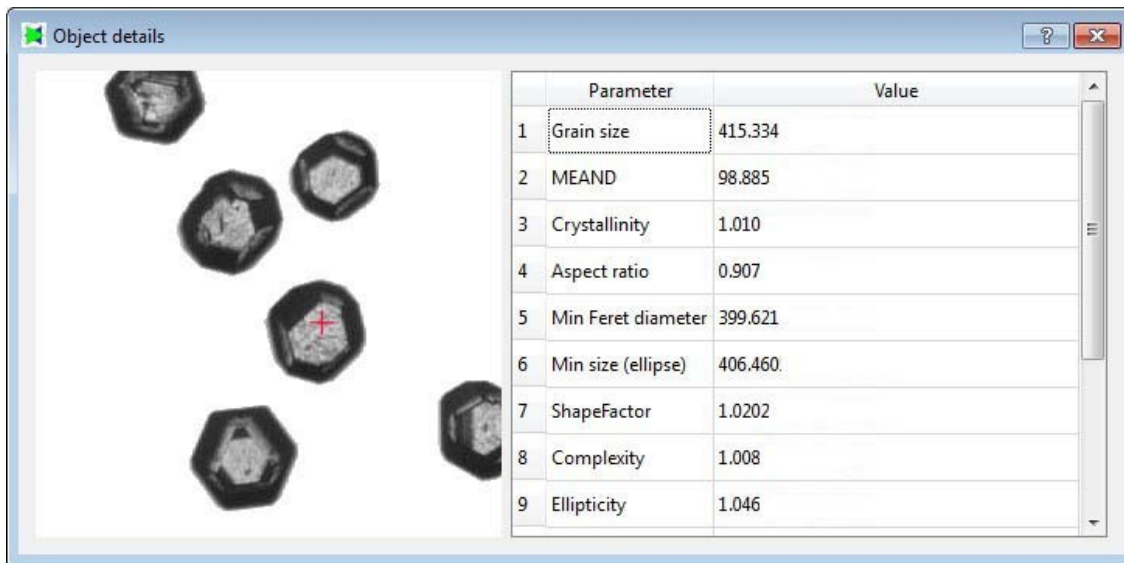


DiaShape – important analysis features

1. Every single object can be identified and the measurement values can be seen directly

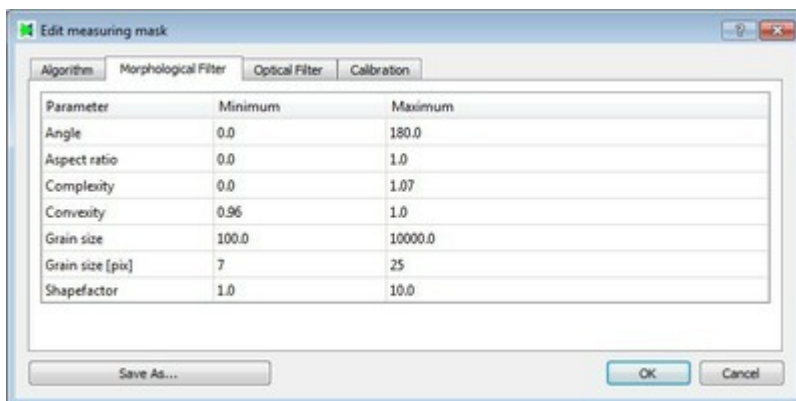
- size: grain size $\hat{=}$ **carat**
- shape $\hat{=}$ **cut**: crystallinity, ellipticity
- optical properties:
transparency $\hat{=}$ **clarity**
color



2. Well structured measurement conditions

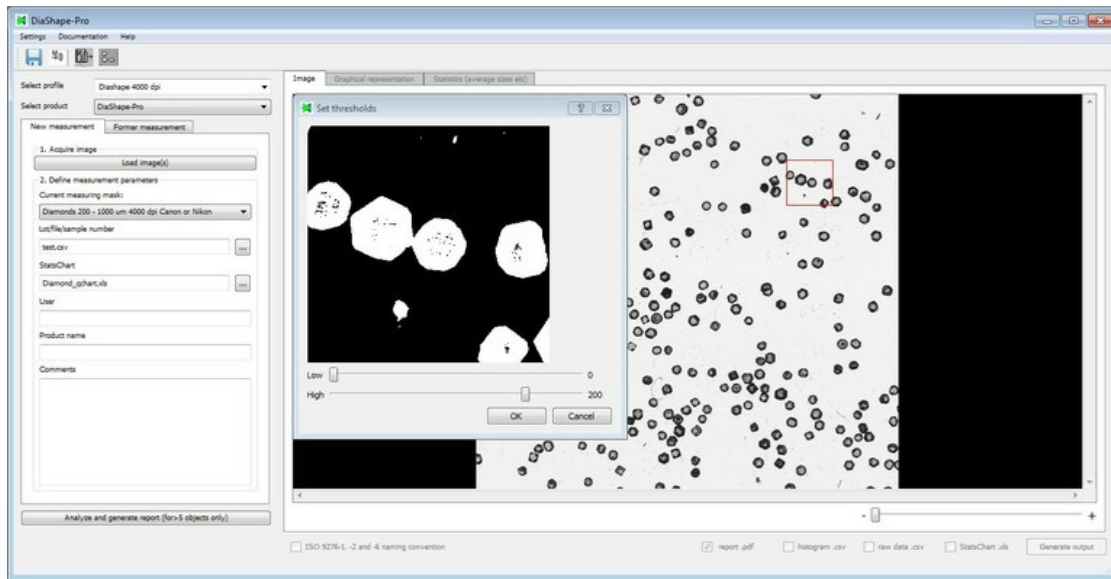
Four categories:

- Algorithm
- Morphological filter
- Optical filter
- Calibration



The editor permits to edit the currently active mask which makes it faster and well structured. It is responsive and interactive. You quickly get a feedback of your changes in the histograms.

3. With right-click on the image the profile settings, threshold segmentation and resolution settings can be changed



4. Interactive Reporting System with many reporting capabilities

- Report according to ISO 9276-1 (if selected)
- The following reports can be generated: report.pdf, histogram.csv, raw data.csv und qchart.xls
- The reporting system is divided in the following areas:
 - Graphical representation
 - Statistics

